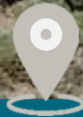


VESTAS V42

FOR SALE



**Koudia Al Baida Wind Farm
Morocco**



SURUS

1. KOUDIA EL BAIDA WIND FARM DATA SHEET

Brands and model of wind turbines	VESTAS V42
Unitary power	600 kW
Class – Standard	IEC S Certified
Date of manufacture	1999
Date of commissioning	2000
Total number of wind turbines	73 units
Hub height	35 m, 40 m and 50 m
Maintenance history	Available
Supplier documentation	Available

2. VESTAS Wind Turbines

1. NACELLE

With the exception of the rotor, all components of the wind turbine are located in the nacelle. A special tool: Pre-adjusted slings and chains are used for handling it.

The nacelle is located at the top of the tower, tilted from the horizontal at +5 degrees. All nacelle components must remain assembled when handling the machine.

Description	Dimension	Weight
Nacelle (all components are considered except the rotor)	6.67 X 2.66 X 2.24	21 T

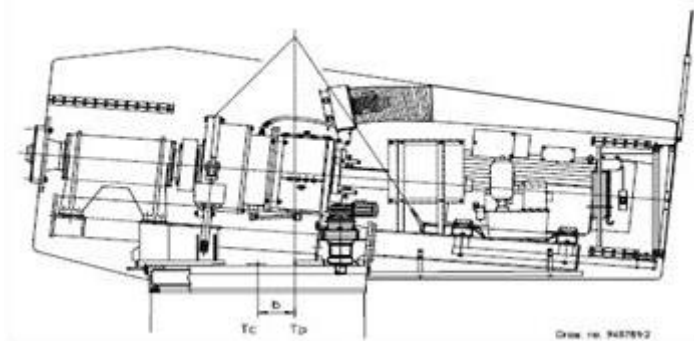


Figure 2: VESTAS V42 Nacelle Handling Plan

2. ROTOR AND BLADES:

Description	Dimension	Weight
Complete rotor	Diameter 42 m	8.5 T
Blade	Length 21 m	1.1 T

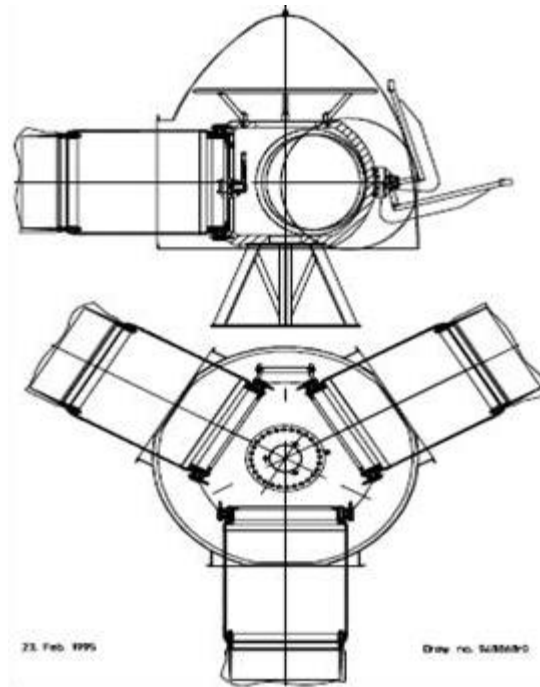


Figure 3: Plan of VESTAS Rotors

3. Technical Features

Technical characteristics	
Model	V42
Generator type	Asynchronous
Manufacturer	Vestas
Year	1998-2000
Nº of Wind Turbine	64(minus 1 and 1 withou nacelle
Rated power	600 Kw
Start-up date	August 2000
Output voltage	690 V
Operating hours/ WTG	164688
Stopping times/WTG	10512
Current maintenance plan	YES

Rotor	
Blades	Features Quantity(3) Length((20 m) Base rope(1,56) Weight(1,1t)
Diameter	42 m
Swept area	1385 m ²
Connection speed	5 m/s
Disconnection speed	25m/s
Rotor speed, max:	30 RPM
Max. design speed	m/s
Rotor speed	30 RPM
Rotation direction	Clockwise
Orientation	Upwind
Aerodynamic brakes	calage

Gear Box	
Manufacturer	Hansen
Characteristics	660 Kw 30/1500 45,626:1 (4150 Kg sans frette)

Weight	
Single blade	1,1 t
Hub	1,7 t
Rotor	8,5 t
Nacelle	21 t
Total weight	20t



4. **HOW TO BUY?**

The wind turbines are sold at Escrapalia.com, online auction website.

Possibility to bid individually or in lots. The option that obtains the highest bid will be awarded.

Steps to participate:

- Sign up in Escrapalia as a user and fill in your invoicing data
- Make the deposit of the lots you want to bid for
- Once enabled, you can start bidding until the finishing data and time

Due to the amount of WT to be disassembled, the sale will be performed in different auction dates. The first 10 units are now available until September 29th. We will announce the next auction dates as the disassembly works develop.

5. **KEY DATES**



Visit dates

September 21 and 22, 2022



End date

September 29, 2022
(First 10)

6. **COLLECTION TERMS**

The WT will be dismantled by a specialized company. The complete nacelle, rotor and blades will be gathered in an accessible location at the wind farm. The buyers provide the transportation, and we will load the equipment on it. In case of not being interested in the blades we manage their recycling.

Dates of collection are indicated in each lot, and they cannot be changed.

7. LOCATION



[LINK TO GOOGLE MAPS](#)

8. CONTACT DETAILS



Maria Eugenia Serratto
Project Manager

✉ mserratto@surusin.com

☎ +34 649 769 056

[LINK TO THE AUCTION](#)

